

201 W. Passaic Street

Rochelle Park, New Jersey



BERGMAN
REAL ESTATE GROUP

bergmanrealty.com



201

W. PASSAIC STREET

SHERBROOKE
OFFICE CENTER II

 **TOBY®
AWARDS**
THE OUTSTANDING BUILDING OF THE YEAR
Excellence in Building Management



bergmanrealty.com

201 W. Passaic Street

Rochelle Park, New Jersey



BERGMAN
REAL ESTATE GROUP

bergmanrealty.com

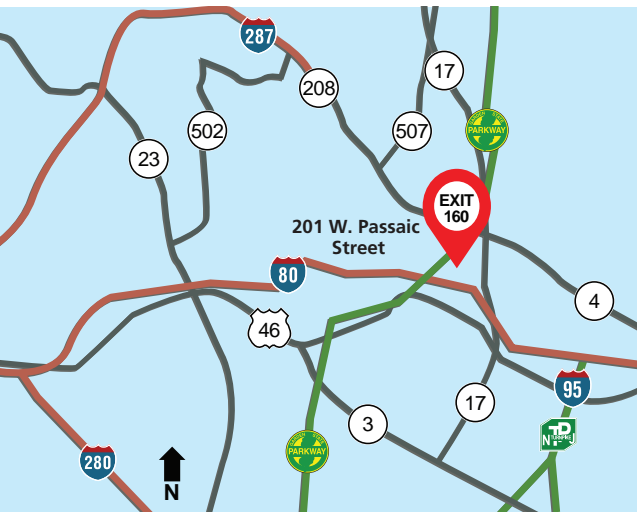


Building Features

- Four-story office building totaling 65,000 sq. ft.
- Flexible floor plates to accommodate users of 1,000 sq. ft. to a full floor of 17,000 sq. ft.
- Ample surface parking
- Professional on-site ownership and management
- Interior renovations planned
- Walk to stores and restaurants across the street

Location Features

- Situated at Exit 160 of the Garden State Parkway
- Immediate access to Routes 4, 17, 46, 208 and I-80
- Adjacent to the Garden State Plaza Mall and Ramada Inn with close proximity to the Courtyard by Marriott
- 9 miles to the George Washington Bridge
- NJ Transit bus service in front of building
- 20 minutes to Manhattan



201
W. PASSAIC STREET
SHERBROOKE
OFFICE CENTER II

For leasing information please contact:

John G. Osborne

Executive Director of Leasing & Marketing

732-855-8600 ext.115

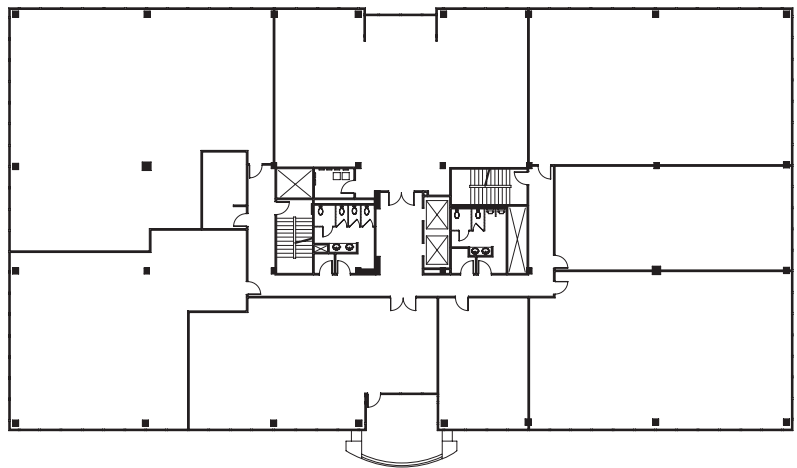
josborne@bergmanrealty.com

Isabel Freire

Senior Director of Leasing & Marketing

732-855-8600 ext.120

isabel@bergmanrealty.com



BERGMAN
REAL ESTATE GROUP