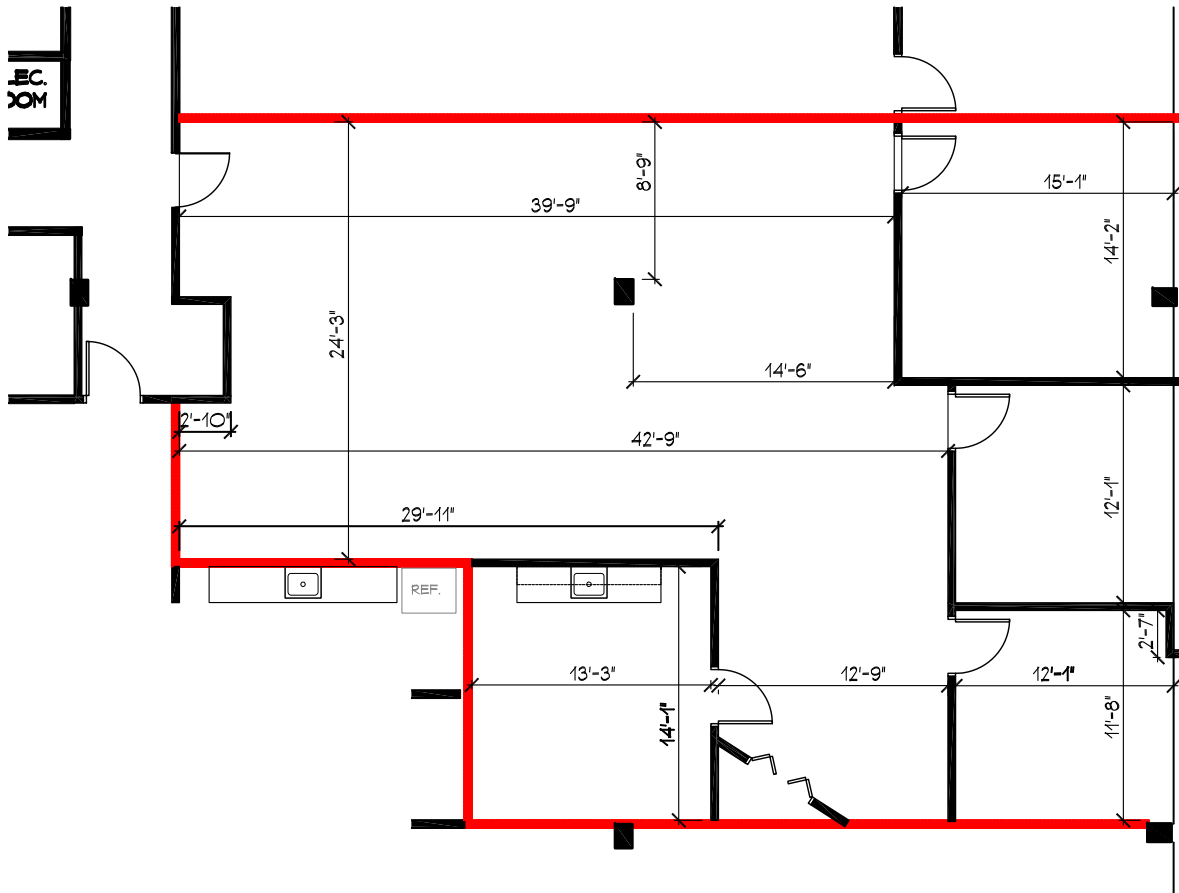
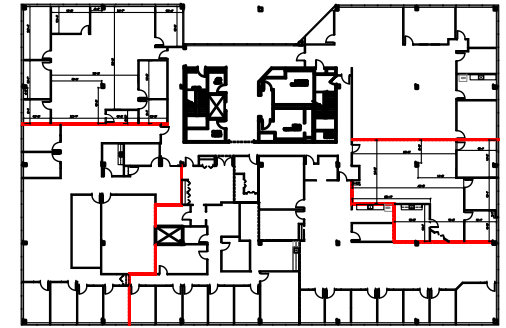


Contact:  
 John G. Osborne, Executive Director  
 Leasing & Marketing 732-855-8600 X115  
 Isabel Freire, Assistant Director  
 Leasing & Marketing 732-855-8600 X120



**THIRD FLOOR - SUITE # 305 - 2,391 RSF**



**KEY PLAN**  
 N.T.S.

**ASPEN CORPORATE PARK**  
**1480 ROUTE 9 NORTH, WOODBRIDGE, NEW JERSEY**  
**MARKETING PLAN**



JOB # 29567-A  
 ISSUE DATE: 2017-06-12  
 VERSION - 1.0