

# 365 W. Passaic Street

Rochelle Park, New Jersey



# 365

W. PASSAIC STREET



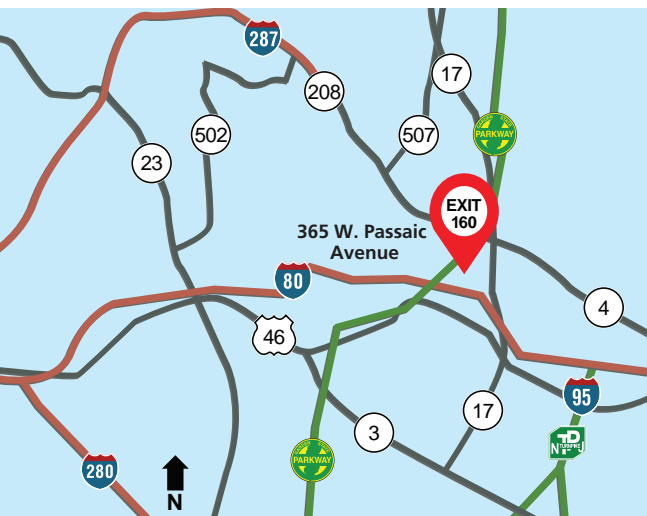
# 365 W. Passaic Street

Rochelle Park, New Jersey



**BERGMAN**  
REAL ESTATE GROUP

bergmanrealty.com

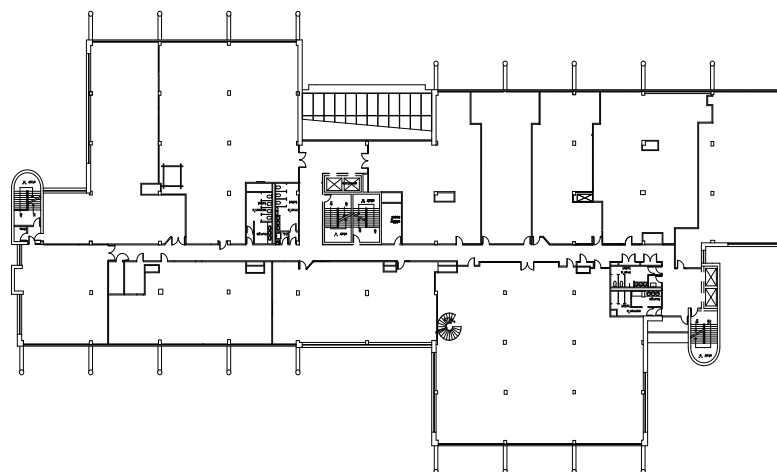


## Building Features

- Five-story office building comprising a total of 218,500 sq. ft.
- Flexible floor plates to accommodate 1,000 sq. ft. to 50,000 sq. ft. users
- Full-height atrium lobby
- Full-service café and seating area
- Ample surface parking
- Two sets of elevator banks
- Professional on-site ownership & management

## Location Features

- Situated at Exit 160 of the Garden State Parkway
- Immediate access to Routes 4, 17, 46, 208 and I-80
- Adjacent to the Garden State Plaza Mall and Ramada Inn with close proximity to the Courtyard by Marriott
- 9 miles to the George Washington Bridge
- NJ Transit bus service in front of building
- 20 minutes to Manhattan



# 365

W. PASSAIC STREET

For leasing information please contact:

**John G. Osborne**

*Executive Director of Leasing & Marketing*

732-855-8600 ext.115

josborne@bergmanrealty.com

**Isabel Freire**

*Senior Director of Leasing & Marketing*

732-855-8600 ext.120

isabel@bergmanrealty.com

A Joint Venture Between

