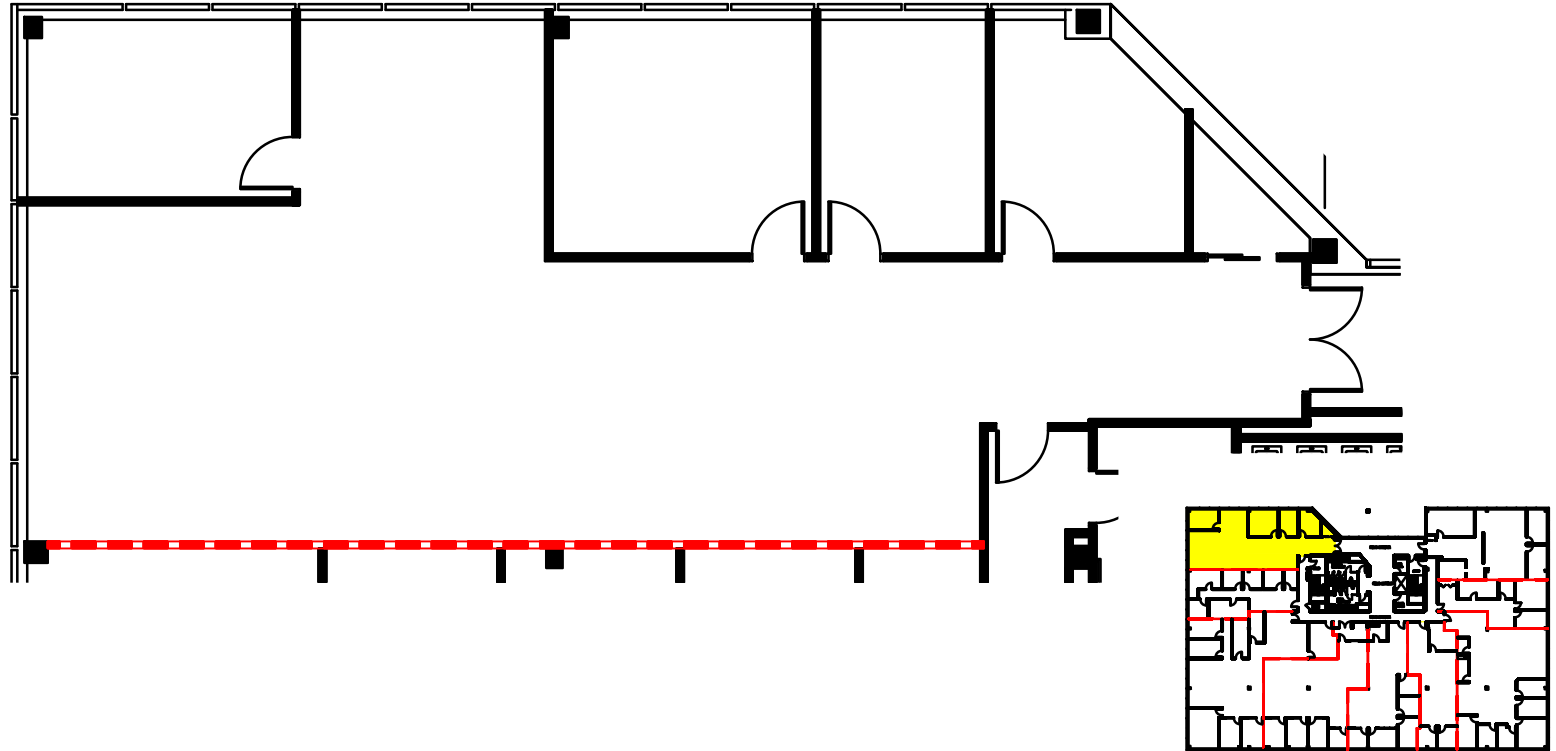




BERGMAN
REAL ESTATE GROUP

Contact:
John G. Osborne, Executive Director
Leasing & Marketing 732-855-8600 X115
Kelly Ziegenfuss, Assistant Director
Leasing & Marketing 732-855-8600 X109



2ND FLOOR - SUITE # 200 - RSF: 2,632 RSF

**ASPEN CORPORATE PARK
1460 ROUTE 9 NORTH, WOODBRIDGE, NEW JERSEY
SECOND FLOOR SUITE PLAN**

KEY PLAN

OCCUPIED 

VACANT 

JOB # 28209-C
ISSUE DATE: 2019-09-05

