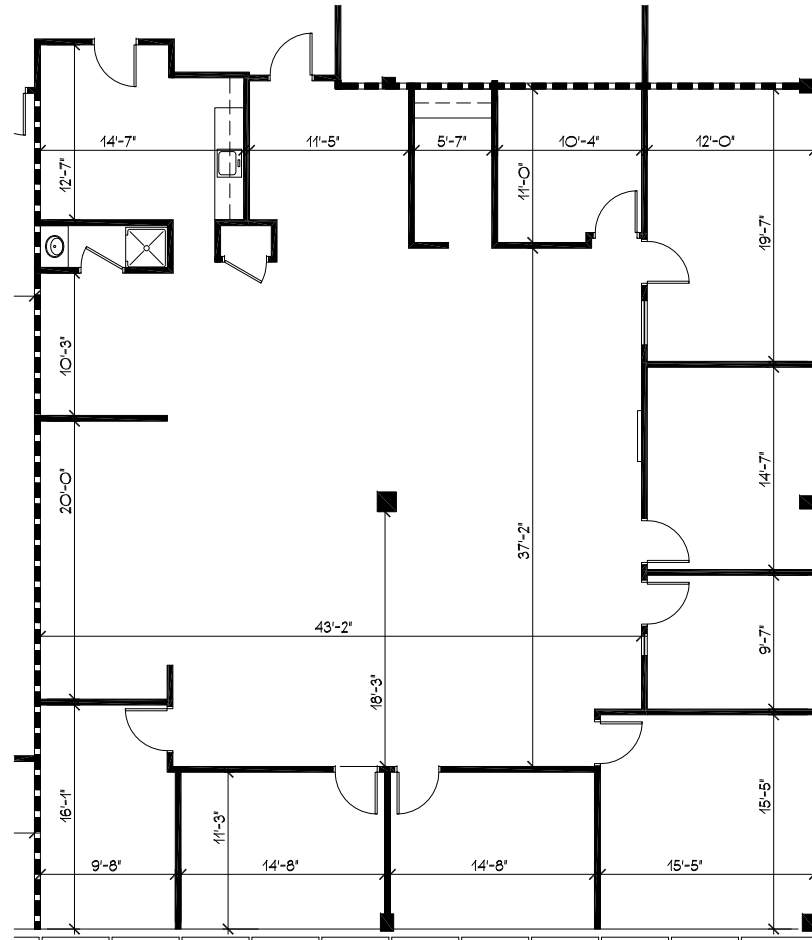
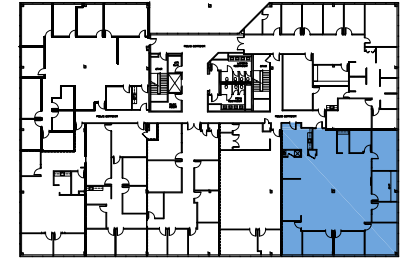




Contact:
 John G. Osborne, Executive Director
 Leasing & Marketing 732-855-8600 X115
 Kelly Ziegenfuss, Assistant Director
 Leasing & Marketing 732-855-8600 X109



SECOND FLOOR - SUITE # 204 - 4,302 RSF



KEY PLAN



**ASPEN CORPORATE PARK
 1480 ROUTE 9 NORTH, WOODBRIDGE, NEW JERSEY
 SECOND FLOOR SUITE PLAN**

JOB # 28210-C
 ISSUE DATE: 05-29-2015

