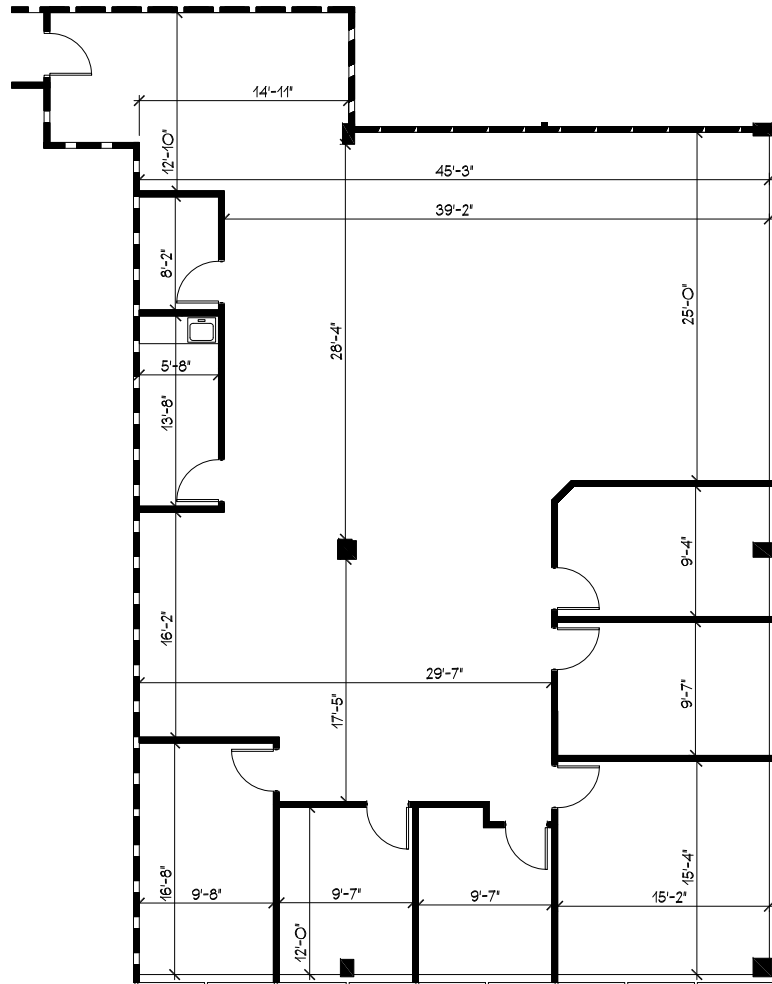
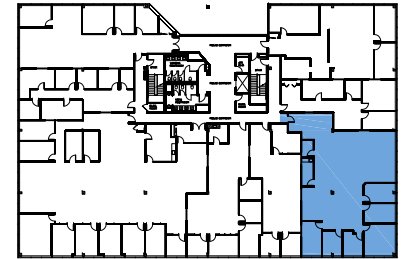




Contact:  
 John G. Osborne, Executive Director  
 Leasing & Marketing 732-855-8600 X115  
 Kelly Ziegenfuss, Assistant Director  
 Leasing & Marketing 732-855-8600 X109



**SECOND FLOOR - SUITE # 207 - 3,773 RSF**



**KEY PLAN**



**ASPEN CORPORATE PARK  
 1460 ROUTE 9 NORTH, WOODBRIDGE, NEW JERSEY  
 SECOND FLOOR SUITE PLAN**

JOB # 28209-C  
 ISSUE DATE: 05-22-2015

