

365 W. Passaic Street

Rochelle Park, New Jersey



365

W. PASSAIC STREET

Coming Soon

- Lobby & Café renovations
- Restroom upgrades
- Common area improvements
- New landscaping plans



bergmanrealty.com

365 W. Passaic Street

Rochelle Park, New Jersey



BERGMAN
REAL ESTATE GROUP

bergmanrealty.com

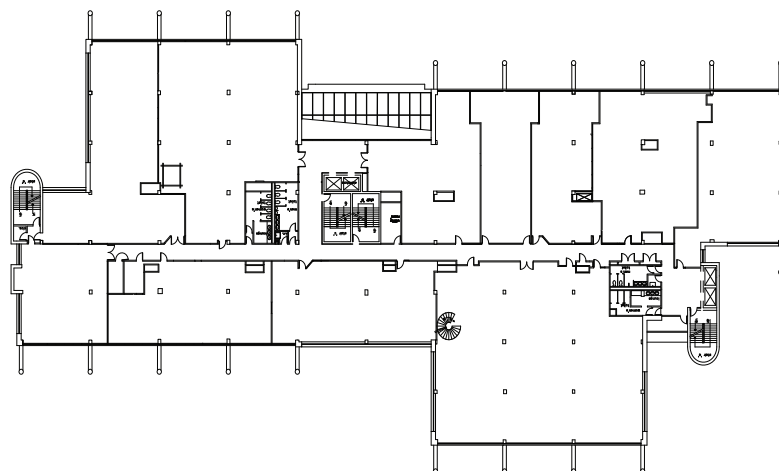
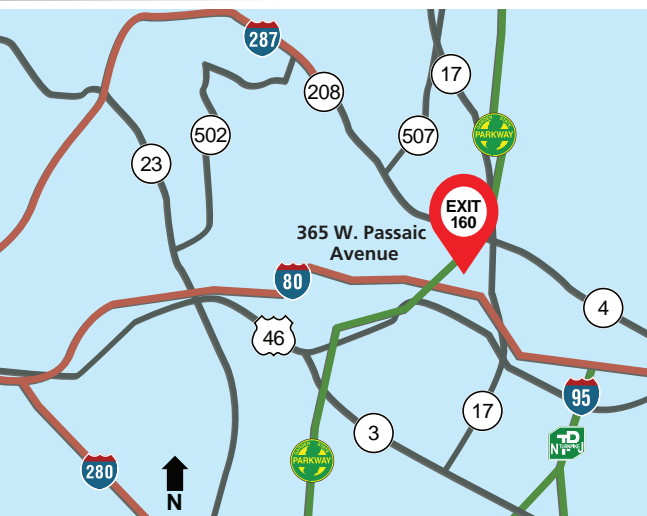


Building Features

- Five-story office building comprising a total of 218,500 sq. ft.
- Flexible floor plates to accommodate 1,000 sq. ft. to 50,000 sq. ft. users
- Full-height atrium lobby
- Full-service café and seating area
- Ample surface parking
- Two sets of elevator banks
- Professional on-site ownership & management

Location Features

- Situated at Exit 160 of the Garden State Parkway
- Immediate access to Routes 4, 17, 46, 208 and I-80
- Adjacent to the Garden State Plaza Mall and Ramada Inn with close proximity to the Courtyard by Marriott
- 9 miles to the George Washington Bridge
- NJ Transit bus service in front of building
- 20 minutes to Manhattan



365

W. PASSAIC STREET

For leasing information please contact:

John G. Osborne

Executive Director of Leasing & Marketing

732-855-8600 ext.115

josborne@bergmanrealty.com

Isabel Freire

Assistant Director of Leasing & Marketing

732-855-8600 ext.120

isabel@bergmanrealty.com

A Joint Venture Between



BERGMAN
REAL ESTATE GROUP



TAK GROUP
Real Estate • Healthcare • Construction • Development