



333 Meadowlands
Parkway

333 MEADOWLANDS PARKWAY
SECAUCUS, NEW JERSEY


GOTTESMAN
REAL ESTATE PARTNERS


BERGMAN
REAL ESTATE GROUP
Owners/Managers

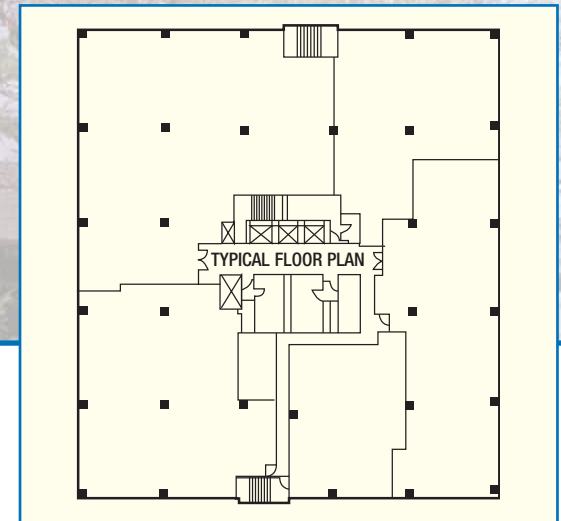
333 MEADOWLANDS PARKWAY SECAUCUS, NEW JERSEY

Building Features and Amenities:

- Six-story office building with attached retail comprising 138,000 sq. ft.
- \$2 million of recent capital improvements, including beautiful new Alucobond composite facade
- Beautiful views of the Meadowlands and the NYC skyline
- On-site restaurant and Chase Bank branch with drive-thru
- Plenty of parking including some covered
- On-site Building Manager
- Professional local Ownership and Management

Location Features:

- Prime location near juncture of Route 3 and NJ Turnpike with easy access to area's major highways including, GSP, I-495, I-280, I-78, and Routes 17, 46, 1 and 9
- Less than 1 mile from new interchange Exit 15X of NJ Turnpike and Secaucus Junction Train Station
- Easy access to Manhattan and Newark Liberty International Airport
- Convenient to hotels, retail, restaurants
- Part of 980-acre Harmon Cove mixed-use community



For leasing information please contact:

John G. Osborne, Director of Leasing (ext. 115)
Isabel Freire, Assistant Director of Leasing (ext. 120)

732.855.8600

www.bergmanrealty.com