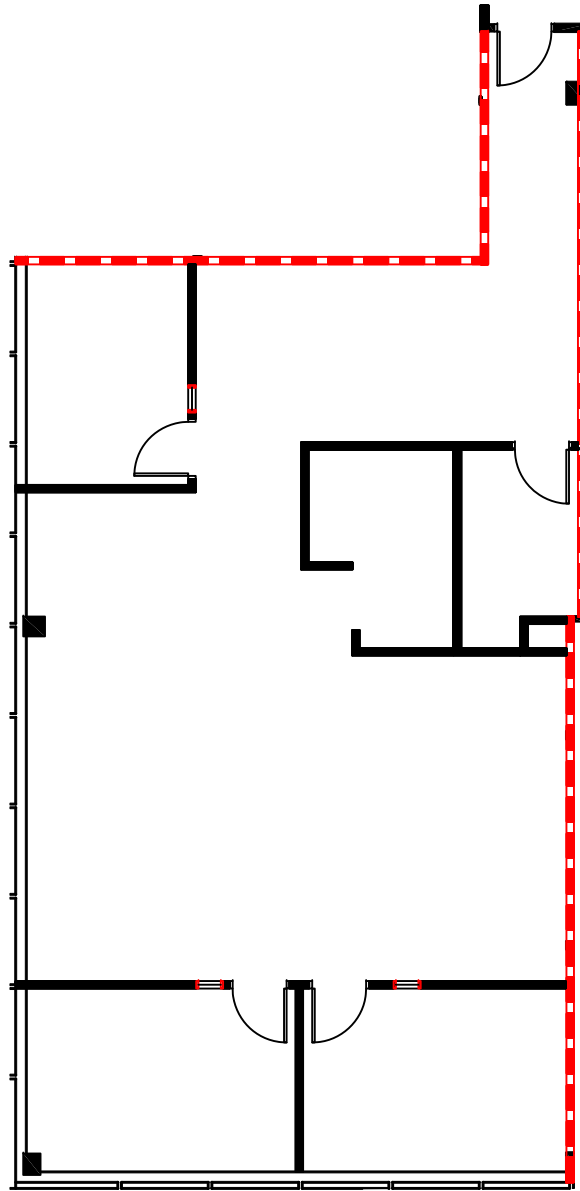
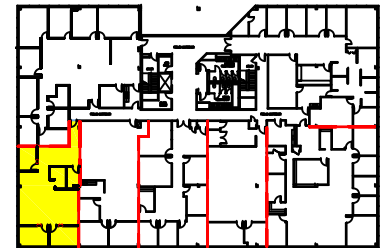






Contact:  
John G. Osborne, Executive Director  
Leasing & Marketing 732-855-8600 X115  
Kelly Ziegenfuss, Assistant Director  
Leasing & Marketing 732-855-8600 X109



**2ND FLOOR - SUITE # 207 - RSF: 2,069 RSF**



**KEY PLAN**

- OCCUPIED 
- VACANT 

**ASPEN CORPORATE PARK  
1480 ROUTE 9 NORTH, WOODBRIDGE, NEW JERSEY  
SECOND FLOOR SUITE PLAN**

JOB # 29567-A  
ISSUE DATE: 2018-02-02

