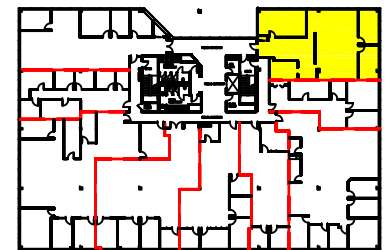
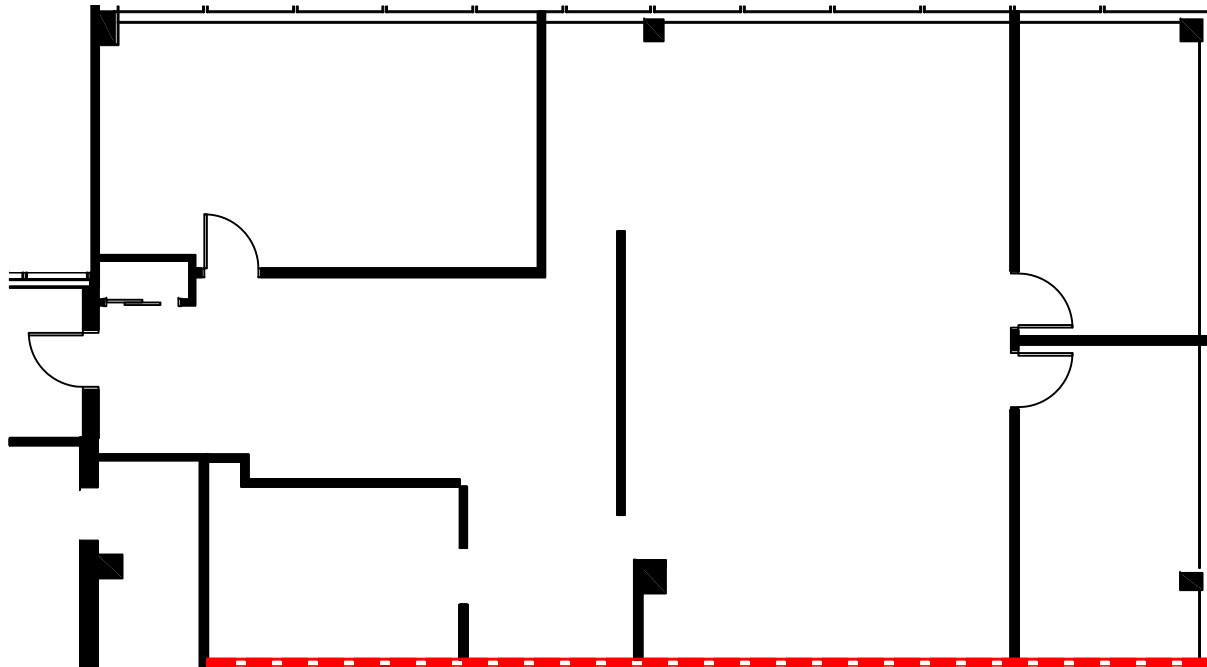


Contact:
John G. Osborne, Executive Director
Leasing & Marketing 732-855-8600 X115
Kelly Ziegenfuss, Assistant Director
Leasing & Marketing 732-855-8600 X109



2ND FLOOR - SUITE # 209 - RSF: 2,705 RSF

**ASPEN CORPORATE PARK
1460 ROUTE 9 NORTH, WOODBRIDGE, NEW JERSEY
SECOND FLOOR SUITE PLAN**

KEY PLAN

OCCUPIED 

VACANT 

JOB # 29568-A
ISSUE DATE: 2018-02-02