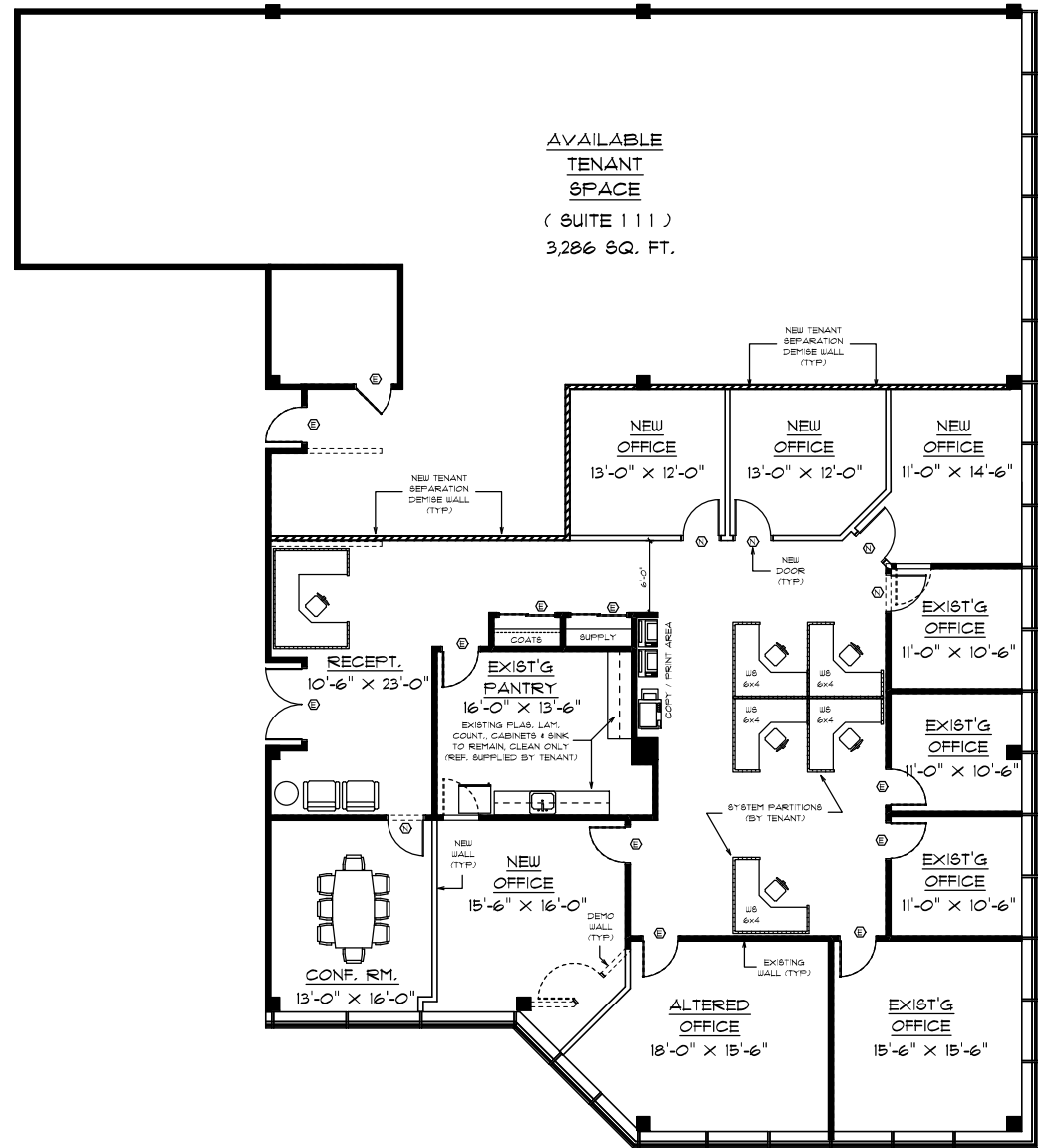
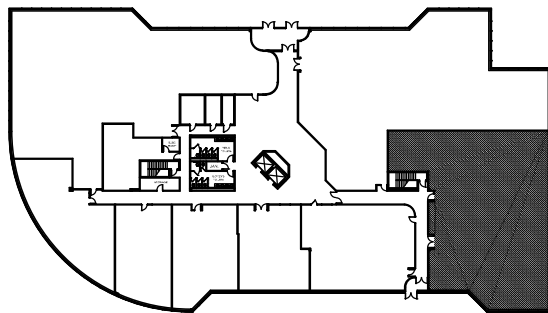


PROPOSED OFFICE EXHIBIT PLAN FOR:

1ST FLOOR, (SUITE 110), 25B VREELAND, FLORHAM PARK, NJ
 DWG. # P-1 DATE: 9/ 20/ 17
 RENTABLE FLOOR AREA = 4,089 SQ. FT

NOTE:
 THIS PRELIMINARY EXHIBIT PLAN REPRESENTS TENANT'S DESIGN INTENT ONLY!
 ANY/ALL ALTERATION WORK SHOWN OR IMPLIED BY THIS DRAWING DOES NOT
 NECESSARILY CONSTITUTE LANDLORD'S WORK. ALL CONSTRUCTION COSTS TO BE
 AS NEGOTIATED BETWEEN LANDLORD AND TENANT BASED ON FINAL LEASE AGREEMENT.
 ANY/ALL FURNITURE, WORKSTATIONS AND EQUIPMENT ARE FOR DIAGRAMATIC PURPOSES
 ONLY AND ARE TO BE 'BY TENANT' (UNLESS OTHERWISE NOTED.)
 ALL DIMENSIONS AND ROOM SIZES AS INDICATED ON PLAN ARE APPROXIMATE.
 ACTUAL SIZES AND CONSTRUCTION MAY VARY SLIGHTLY DUE TO FIELD CONDITIONS.



AVAILABLE
 TENANT
 SPACE
 (SUITE 111)
 3,286 SQ. FT.

FIRST FLOOR - SUITE 110 & 111 - 7,375 SQ. FT.

Owned And Managed By:



BERGMAN
 REALTY GROUP

— John Osborne, Exec. Director Leasing —
 732-855-8600 ext. 115
 Josborne@BergmanRealty.com

25B VREELAND ROAD
 FLORHAM PARK, NJ
 www.bergmanrealty.com



INTERIOR SPACE PLANNING
 JEFFREY BARTON, A.I.A., P.C.
 ARCHITECT

697 MILL CREEK RD, SUITE 10-12
 MANAHAWKIN, N.J. 08050

T: 609 - 488 - 5190
 F: 609 - 488 - 5605