



HOLMDEL EXECUTIVE CENTER

960 HOLMDEL ROAD, HOLMDEL, NEW JERSEY



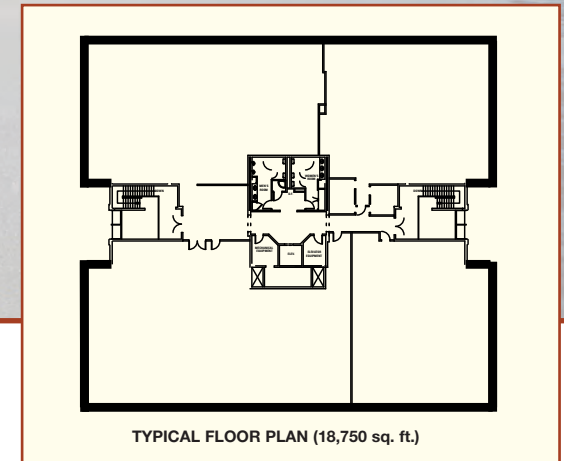
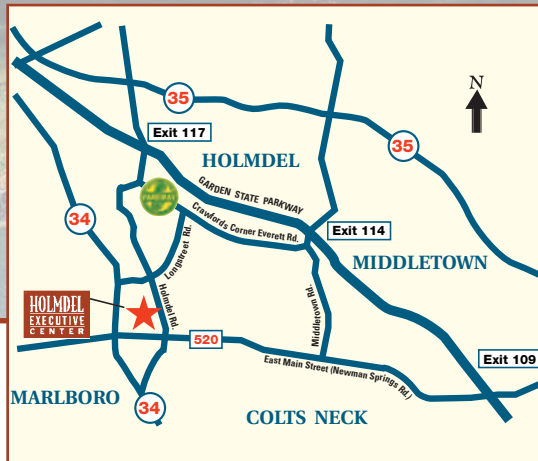
960 HOLMDEL ROAD HOLMDEL, NEW JERSEY

Building Features & Amenities:

- Two, 37,500 square foot 2-story brick office buildings comprising a total of 75,000 square feet on 17-acre site
- 24-hour access
- Ample parking (4.5 spaces per 1,000 rentable sq. ft.)
- Professionally landscaped grounds
- On-site Building Manager
- Professional local Ownership and Management

Location Features:

- Prestigious Monmouth County Address
- Near intersection of Routes 34 and 520.
- Excellent access to Garden State Parkway (Exits 109, 114 or 117), Routes 18, 35 and 520.
- Corporate neighbors include Lucent, Telcordia and Prudential
- Abundant, diverse and highly-educated labor pool
- Convenient to restaurants, shopping and banking



For leasing information please contact:

John G. Osborne, Director of Leasing (ext. 115)
Isabel Freire, Assistant Director of Leasing (ext. 120)

732.855.8600

www.bergmanrealty.com